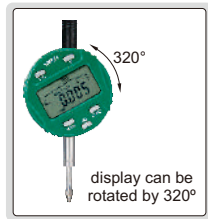
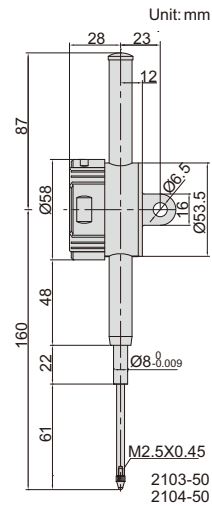
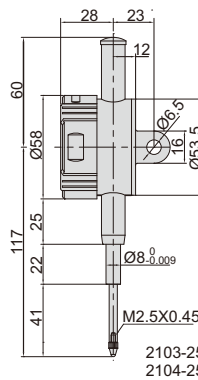
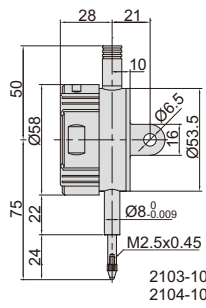


INSPECTION CERTIFICATE
TRACEABLE TO NIST



DATA OUTPUT

DIGITAL INDICATORS (ADVANCED MODEL)

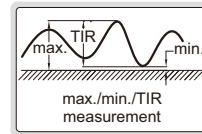


- Reading in digital and analog
- Display can be rotated by 320°
- Button function: tolerance Go and No-Go display, data preset, measuring direction change, max./min./TIR measurement, inch/metric conversion, absolute/incremental measurement
- CR2032 battery, automatic power off
- Data output
- Optional accessory: data output cable (code 7306-40, 7302-SPC3A, 7305-SPC1A), backs (page 88), contact points (page 86~87)

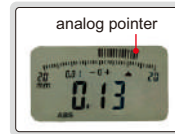
spindle lift knob is included



max./min./TIR



analog pointer



Resolution 0.001mm/0.00005"

Code	Range	Accuracy	Hysteresis	Remark
2103-10F*	12.7mm/0.5"	5µm	2µm	flat back
2103-25F*	25.4mm/1"	5µm	3µm	flat back
2103-50F*	50.8mm/2"	6µm	3µm	flat back
2103-10*	12.7mm/0.5"	5µm	2µm	lug back
2103-25*	25.4mm/1"	5µm	3µm	lug back
2103-50*	50.8mm/2"	6µm	3µm	lug back

Resolution 0.01mm/0.0005"

Code	Range	Accuracy	Hysteresis	Remark
2104-10F*	12.7mm/0.5"	20µm	10µm	flat back
2104-25F*	25.4mm/1"	20µm	10µm	flat back
2104-50F*	50.8mm/2"	30µm	10µm	flat back
2104-10*	12.7mm/0.5"	20µm	10µm	lug back
2104-25*	25.4mm/1"	20µm	10µm	lug back
2104-50*	50.8mm/2"	30µm	10µm	lug back

* Supplied with manufacturer inspection certificate traceable to NIST USA

INSPECTION CERTIFICATE
TRACEABLE TO NIST

ONE BATTERY FOR 4000 WORKING HOURS

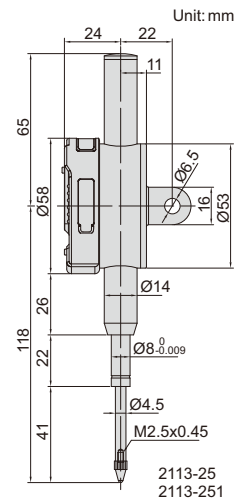
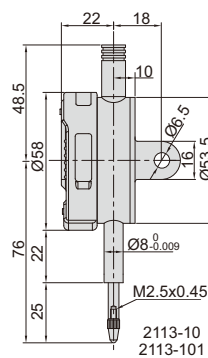
DATA OUTPUT

NO AUTO POWER OFF DIGITAL INDICATORS

data output cable (optional)



spindle lift knob is included



- No auto power off, tracking the deformation of mould and steel structure for a long time
- Low power consumption
- Button function: on/off, zero, inch/mm
- CR2032 battery
- Data output
- Optional accessory: backs (page 88), contact points (page 86~87), data output cable (code 7305-SPC1A)

Resolution 0.001mm/0.00005"

Code	Range	Accuracy	Hysteresis	Remark
2113-101F*	12.7mm/0.5"	5µm	2µm	flat back
2113-251F*	25.4mm/1"	5µm	3µm	flat back
2113-101*	12.7mm/0.5"	5µm	2µm	lug back
2113-251*	25.4mm/1"	5µm	3µm	lug back

Resolution 0.01mm/0.0005"

Code	Range	Accuracy	Hysteresis	Remark
2113-10F*	12.7mm/0.5"	20µm	10µm	flat back
2113-25F*	25.4mm/1"	20µm	10µm	flat back
2113-10*	12.7mm/0.5"	20µm	10µm	lug back
2113-25*	25.4mm/1"	20µm	10µm	lug back

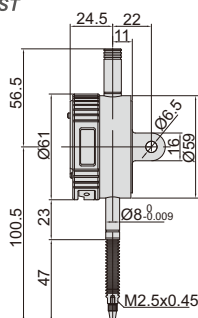
* Supplied with manufacturer inspection certificate traceable to NIST USA

WATERPROOF DIGITAL INDICATORS

INSPECTION CERTIFICATE
TRACEABLE TO NIST

WATERPROOF

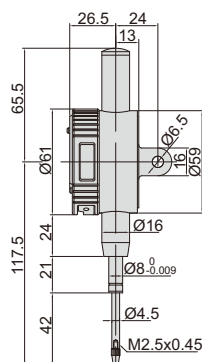
DATA OUTPUT



2115-10
2115-101



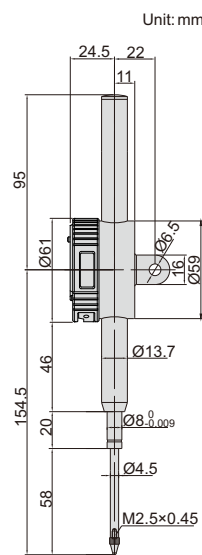
2115-10



2115-25
2115-251



2115-25



2115-50
2115-501



2115-50

spindle lift knob is included (except 2115-101/101F, 2115-10/10F)



Resolution 0.001mm/0.00005"

Code	Range	Dust/waterproof	Accuracy	Hysteresis	Remark
2115-101*	12.7mm/0.5"	IP65	5µm	2µm	lug back
2115-251*	25.4mm/1"	IP54	5µm	3µm	lug back
2115-501*	50.8mm/2"	IP54	6µm	3µm	lug back
2115-101F*	12.7mm/0.5"	IP65	5µm	2µm	flat back
2115-251F*	25.4mm/1"	IP54	5µm	3µm	flat back
2115-501F*	50.8mm/2"	IP54	6µm	3µm	flat back

Resolution 0.01mm/0.0005"

Code	Range	Dust/waterproof	Accuracy	Hysteresis	Remark
2115-10*	12.7mm/0.5"	IP65	20µm	10µm	lug back
2115-25*	25.4mm/1"	IP54	20µm	10µm	lug back
2115-50*	50.8mm/2"	IP54	30µm	10µm	lug back
2115-10F*	12.7mm/0.5"	IP65	20µm	10µm	flat back
2115-25F*	25.4mm/1"	IP54	20µm	10µm	flat back
2115-50F*	50.8mm/2"	IP54	30µm	10µm	flat back

* Supplied with manufacturer inspection certificate traceable to NIST USA

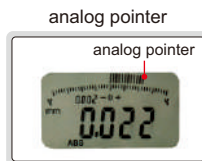
- Dust/waterproof
- Button function: on/off, zero, mm/inch
- CR2032 battery, automatic power off
- Data output
- Optional accessory: data output cable (code 7306-40, 7302-SPC3A, 7305-SPC1A), backs (page 88), contact points (page 86~87)

DIGITAL INDICATORS FOR BORE GAGES

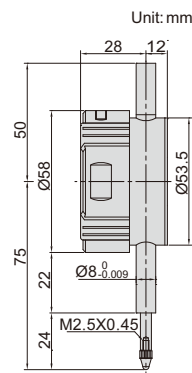
INSPECTION CERTIFICATE
TRACEABLE TO NIST

DATA OUTPUT

- Specially designed for bore gages
- The minimum value tracking function can find the diameter automatically
- Read the diameter directly, after inputting the size of setting ring
- Reading in digital and analog
- Display can be rotated by 320°
- Button function: minimum value tracking, calibration, data preset, inch/metric conversion, absolute/incremental measurement
- CR2032 battery, automatic power off
- Data output
- Optional accessory: data output cable (code 7306-40, 7302-SPC3A, 7305-SPC1A), backs (page 88), contact points (page 86~87)



2108-10F



Code	Range	Resolution	Accuracy	Hysteresis	Remark
2108-10F*	12.7mm/0.5"	0.002mm/0.0001"	20µm	10µm	flat back
2108-101F*	12.7mm/0.5"	0.001mm/0.00005"	5µm	2µm	flat back

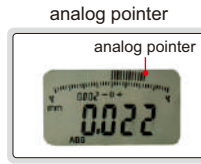
* Supplied with manufacturer inspection certificate traceable to NIST USA



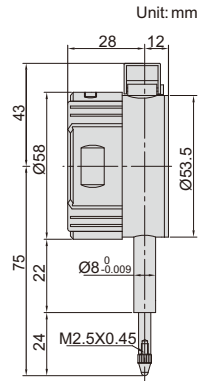
DIGITAL INDICATORS WITH LIFTING LEVER

DATA OUTPUT

- Reading in digital and analog
- Display can be rotated by 320°
- Button function: tolerance Go and No-Go display, data preset, measuring direction change, max./min./TIR measurement, inch/metric conversion, absolute/incremental measurement
- CR2032 battery, automatic power off
- Data output
- Optional accessory: data output cable (code 7306-40, 7302-SPC3A, 7305-SPC1A), backs (page 88), contact points (page 86~87)



2109-10



Code	Range	Resolution	Accuracy	Hysteresis	Remark
2109-10*	10mm/0.4"	0.01mm/0.0005"	20µm	10µm	flat back
2109-101*	10mm/0.4"	0.001mm/0.00005"	5µm	2µm	flat back

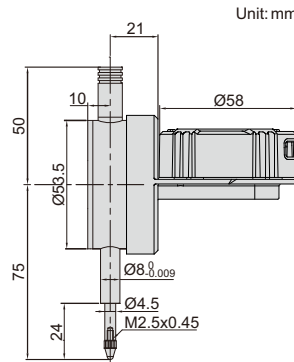
* Supplied with manufacturer inspection certificate traceable to NIST USA



BACK PLUNGER TYPE DIGITAL INDICATORS

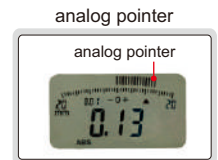
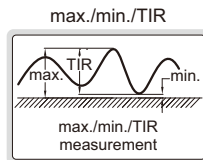


2118-10



DATA OUTPUT

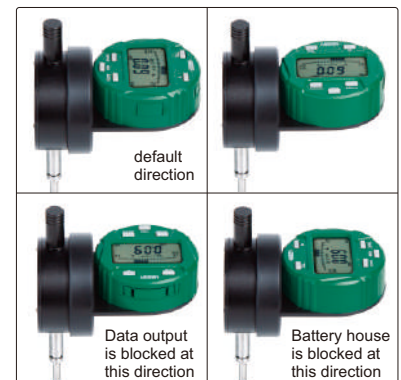
- Display can rotate 320°, and display direction is changeable
- Reading in digital and analog
- Button function: tolerance Go and No-Go display, data preset, measuring direction change, max./min./TIR measurement, inch/metric conversion, absolute/incremental measurement
- CR2032 battery, automatic power off
- Data output
- Optional accessory: data output cable (code 7306-40, 7302-SPC3A, 7305-SPC1A), backs (page 88), contact points (page 86~87)



display can rotate 320°



display direction is changeable



Code	Range	Resolution	Accuracy	Hysteresis	Remark
2118-10 *	12.7mm/0.5"	0.01mm/0.0005"	20µm	10µm	flat back
2118-101 *	12.7mm/0.5"	0.001mm/0.00005"	5µm	2µm	flat back

Remark: To change above direction, 4 fixing screws on the back of display need to be removed first.

* Supplied with manufacturer inspection certificate traceable to NIST USA

LARGE STROKE DIGITAL INDICATORS

spindle lift knob is included



- Button function: on/off, zero, mm/inch
- CR2032 battery, automatic power off
- Data output
- Optional accessory: data output cable (code 7306-40, 7302-SPC3A, 7305-SPC1A), backs (page 88), contact points (page 86~87)

Resolution 0.01mm/0.0005"

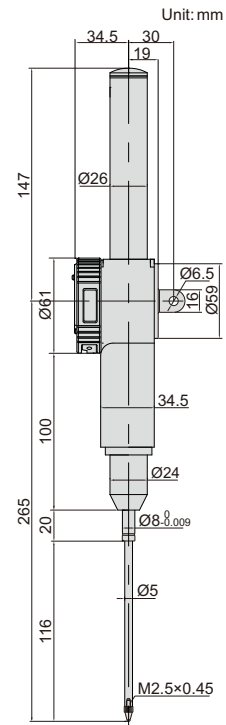
Code	Range	Accuracy	Hysteresis	Remark
2117-100	100mm/4"	30µm	10µm	lug back

Resolution 0.001mm/0.00005"

Code	Range	Accuracy	Hysteresis	Remark
2117-1001	100mm/4"	9µm	3µm	lug back



2117-100



DATA OUTPUT

PRECISION DIAL INDICATORS

- Graduation: 0.001mm
- Jeweled bearing
- Supplied with limit pointers and bezel clamp
- Optional accessory: backs (page 88), contact points (page 86~87)



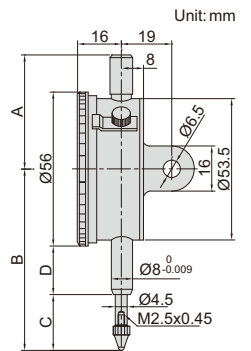
2313-1A

INSPECTION CERTIFICATE TRACEABLE TO NIST

JEWELLED BEARING

Code	Range	Accuracy	Hysteresis	Range/rev	Dial reading	Remark	A	B	C	D
2313-1FA*	1mm	5µm	2µm	0.2mm	0-100-0	flat back	45	62.5	19.5	15
2313-2FA*	2mm	8µm	2.5µm	0.2mm	0-100-0	flat back	45	62.5	19.5	15
2313-1A*	1mm	5µm	2µm	0.2mm	0-100-0	lug back	45	62.5	19.5	15
2313-2A*	2mm	8µm	2.5µm	0.2mm	0-100-0	lug back	45	62.5	19.5	15

(mm)



* Supplied with manufacturer inspection certificate traceable to NIST USA

COMPACT DIAL INDICATORS

- Meet DIN878
- Jeweled bearing
- Supplied with limit pointers and bezel clamp
- Optional accessory: backs (page 88), contact points (page 86~87)



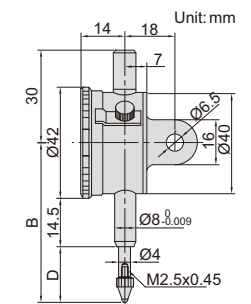
2311-5

INSPECTION CERTIFICATE TRACEABLE TO NIST

JEWELLED BEARING

Code	Range	Graduation	Accuracy	Hysteresis	Range/rev	Dial reading	Remark	B	D
2311-3F*	3mm	0.01mm	14µm	3µm	0.5mm	0-50	flat back	46	10.5
2311-5F*	5mm	0.01mm	16µm	3µm	0.5mm	0-50	flat back	48	12.5
2311-3*	3mm	0.01mm	14µm	3µm	0.5mm	0-50	lug back	46	10.5
2311-5*	5mm	0.01mm	16µm	3µm	0.5mm	0-50	lug back	48	12.5

(mm)



* Supplied with manufacturer inspection certificate traceable to NIST USA

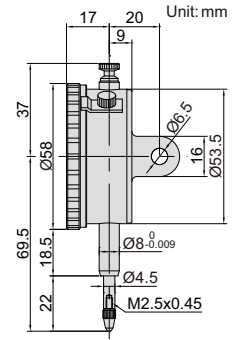
INSPECTION CERTIFICATE
TRACEABLE TO NIST

- Meet DIN878
- Jeweled bearing
- Supplied with limit hands and bezel clamp
- Packed in carton box
- Optional accessory: backs (page 88), contact points (page 86-87)



2301-10

DIAL INDICATORS (PROMOTION MODEL)



Code	Range	Graduation	Accuracy	Hysteresis	Range/rev	Dial reading	Remark
2301-10F*	10mm	0.01mm	17µm	3µm	1mm	0-100	flat back
2301-10*	10mm	0.01mm	17µm	3µm	1mm	0-100	lug back with spare flat back

* Supplied with manufacturer inspection certificate traceable to NIST USA

INSPECTION CERTIFICATE
TRACEABLE TO NIST

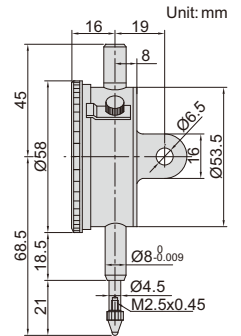
JEWELLED BEARING

- Meet DIN878
- Jeweled bearing
- Supplied with limit pointers and bezel clamp
- Optional accessory: backs (page 88), contact points (page 86-87)



2308-10A

DIAL INDICATORS (STANDARD MODEL)



Code	Range	Graduation	Accuracy	Hysteresis	Range/rev	Dial reading	Remark
2308-3FA*	3mm	0.01mm	14µm	3µm	1mm	0-100	flat back
2308-5FA*	5mm	0.01mm	16µm	3µm	1mm	0-100	flat back
2308-10FA*	10mm	0.01mm	17µm	3µm	1mm	0-100	flat back
2308-3A*	3mm	0.01mm	14µm	3µm	1mm	0-100	lug back
2308-5A*	5mm	0.01mm	16µm	3µm	1mm	0-100	lug back
2308-10A*	10mm	0.01mm	17µm	3µm	1mm	0-100	lug back

* Supplied with manufacturer inspection certificate traceable to NIST USA

INSPECTION CERTIFICATE
TRACEABLE TO NIST

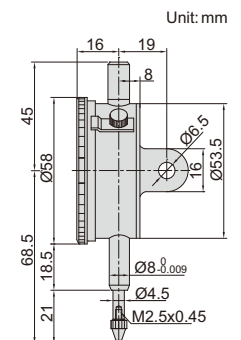
JEWELLED BEARING

- Meet DIN878
- Suitable for depth and step measurements
- Jeweled bearing
- Supplied with limit pointers and bezel clamp
- Optional accessory: backs (page 88), contact points (page 86-87)



2801-10

REVERSE READING DIAL INDICATORS



Code	Range	Graduation	Accuracy	Hysteresis	Range/rev	Dial reading	Remark
2801-10F*	10mm	0.01mm	17µm	3µm	1mm	100-0	flat back
2801-10*	10mm	0.01mm	17µm	3µm	1mm	100-0	lug back

* Supplied with manufacturer inspection certificate traceable to NIST USA

SHOCKPROOF DIAL INDICATORS

SHOCK PROOF

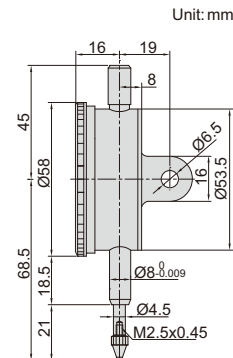
JEWELLED BEARING

- Meet DIN878
- Shockproof
- Jeweled bearing
- Supplied with limit pointers and bezel clamp
- Optional accessory: backs (page 88), contact points (page 86-87)



2314-10A

INSPECTION CERTIFICATE TRACEABLE TO NIST



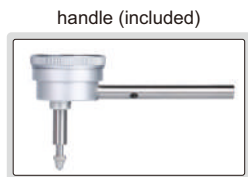
Code	Range	Graduation	Accuracy	Hysteresis	Range/rev	Dial reading	Remark
2314-3FA *	3mm	0.01mm	14µm	3µm	1mm	0-100	flat back
2314-5FA *	5mm	0.01mm	16µm	3µm	1mm	0-100	flat back
2314-10FA *	10mm	0.01mm	20µm	3µm	1mm	0-100	flat back
2314-3A *	3mm	0.01mm	14µm	3µm	1mm	0-100	lug back
2314-5A *	5mm	0.01mm	16µm	3µm	1mm	0-100	lug back
2314-10A *	10mm	0.01mm	20µm	3µm	1mm	0-100	lug back

* Supplied with manufacturer inspection certificate traceable to NIST USA

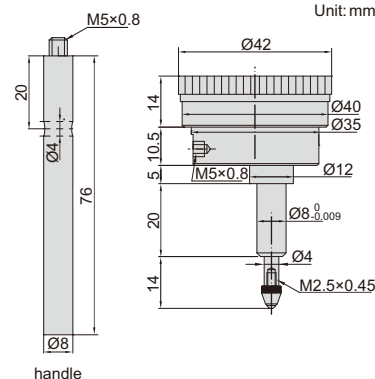
BACK PLUNGER TYPE DIAL INDICATORS

INSPECTION CERTIFICATE TRACEABLE TO NIST

- Supplied with handle
- With limit pointers
- Optional accessory: contact points (page 86-87)



2357-5



Code	Range	Graduation	Accuracy	Hysteresis	Range/rev	Dial reading
2357-5 *	5mm	0.01mm	15µm	5µm	1mm	0-100

* Supplied with manufacturer inspection certificate traceable to NIST USA

WATERPROOF DIAL INDICATORS

INSPECTION CERTIFICATE TRACEABLE TO NIST

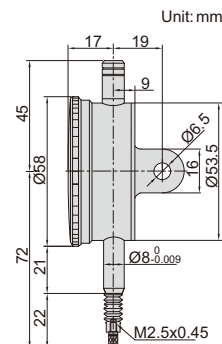
IP54 WATERPROOF

JEWELLED BEARING

- Meet DIN878
- IP54 dust/waterproof
- Jeweled bearing



2324-10



Code	Range	Graduation	Accuracy	Hysteresis	Range/rev	Dial reading	Remark
2324-10F *	10mm	0.01mm	17µm	3µm	1mm	0-100	flat back
2324-10 *	10mm	0.01mm	17µm	3µm	1mm	0-100	lug back

* Supplied with manufacturer inspection certificate traceable to NIST USA



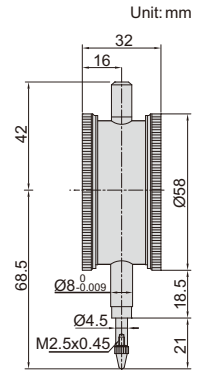
DOUBLE FACE DIAL INDICATOR



front

back

2328-10



- Meet DIN878
- Read from both sides
- Jeweled bearing
- Supplied with limit pointers
- Optional accessory: contact points (page 86~87)

Code	Range	Graduation	Accuracy	Hysteresis	Range/rev	Dial reading
2328-10*	10mm	0.01mm	17µm	3µm	1mm	0-100

* Supplied with manufacturer inspection certificate traceable to NIST USA

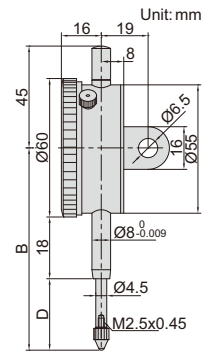
DIAL INDICATORS (GRADUATION 0.1mm)



2318-30

(mm)

- Supplied with limit pointers and bezel clamp
- Optional accessory: contact points (page 86~87)



Code	Range	Graduation	Accuracy	Hysteresis	Range/rev	Dial reading	Remark	B	D
2318-10F	10mm	0.1mm	40µm	20µm	10mm	0-10	flat back	70	20
2318-20F	20mm	0.1mm	50µm	20µm	10mm	0-10	flat back	85	35
2318-25F	25mm	0.1mm	60µm	20µm	10mm	0-10	flat back	85	35
2318-30F	30mm	0.1mm	60µm	20µm	10mm	0-10	flat back	90	40
2318-10	10mm	0.1mm	40µm	20µm	10mm	0-10	lug back	70	20
2318-20	20mm	0.1mm	50µm	20µm	10mm	0-10	lug back	85	35
2318-25	25mm	0.1mm	60µm	20µm	10mm	0-10	lug back	85	35
2318-30	30mm	0.1mm	60µm	20µm	10mm	0-10	lug back	90	40



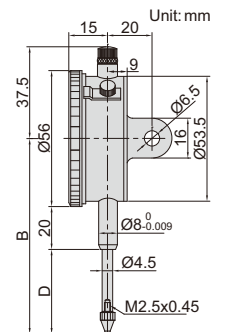
DIAL INDICATORS (LONG STROKE)



2310-30A

(mm)

- Supplied with limit pointers and bezel clamp
- Optional accessory: backs (page 88), contact points (page 86~87)



Code	Range	Graduation	Accuracy	Hysteresis	Range/rev	Dial reading	Remark	B	D
2310-20FA*	20mm	0.01mm	25µm	5µm	1mm	0-100	flat back	83	35
2310-30FA*	30mm	0.01mm	35µm	7µm	1mm	0-100	flat back	88	40
2310-20A*	20mm	0.01mm	25µm	5µm	1mm	0-100	lug back	83	35
2310-30A*	30mm	0.01mm	35µm	7µm	1mm	0-100	lug back	88	40

* Supplied with manufacturer inspection certificate traceable to NIST USA

- Supplied with limit pointers and bezel clamp
- Packed in carton box
- Optional accessory: backs (page 88), contact points (page 86~87)



2302-25

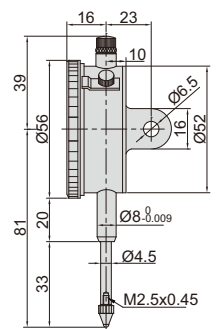
INSPECTION CERTIFICATE
TRACEABLE TO NIST

DIAL INDICATORS (LONG STROKE)

carton box



Unit: mm



Code	Range	Graduation	Accuracy	Hysteresis	Range/rev	Dial reading	Remark
2302-25F *	25mm	0.01mm	35µm	7µm	1mm	0-100	flat back
2302-25 *	25mm	0.01mm	35µm	7µm	1mm	0-100	lug back with spare flat back

* Supplied with manufacturer inspection certificate traceable to NIST USA

- Graduation: 0.01mm
- Meet DIN878
- Eliminate the possibility of reading errors due to miscounting
- Shockproof
- Supplied with limit pointers
- Optional accessory: backs (page 88), contact points (page 86~87)

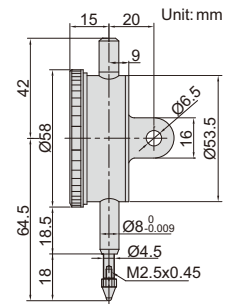
INSPECTION CERTIFICATE
TRACEABLE TO NIST

ONE REVOLUTION DIAL INDICATORS

SHOCK PROOF



2316-05



Code	Range	Accuracy	Hysteresis	Dial reading	Remark
2316-05F *	0.5mm	9µm	3µm	25-0-25	flat back
2316-1F *	1mm	9µm	3µm	50-0-50	flat back
2316-05 *	0.5mm	9µm	3µm	25-0-25	lug back
2316-1 *	1mm	9µm	3µm	50-0-50	lug back

* Supplied with manufacturer inspection certificate traceable to NIST USA

- Shockproof
- Jeweled bearing
- Supplied with limit pointers
- Optional accessory: backs (page 88), contact points (page 86~87)



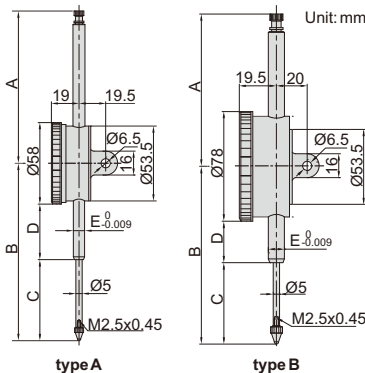
2309-50

DIAL INDICATORS (LONG STROKE)

INSPECTION CERTIFICATE
TRACEABLE TO NIST

JEWELLED BEARING

SHOCK PROOF



Code	Type	A	B	C	D	E
2309-30F	A	37.5	89.5	40.9	19.5	Ø8
2309-30	A	37.5	89.5	40.9	19.5	Ø8
2309-50	A	108.3	126.2	57.7	39.5	Ø8
2309-50D	B	108.3	126.2	57.7	29.5	Ø8
2309-80	A	138.4	168.4	88	51.3	Ø8
2309-80D	B	138.4	168.4	88	41.3	Ø8
2309-100D	B	167.6	207.8	108	60.8	Ø10

back of type B



stem clamp Ø10mm for 2309-100D



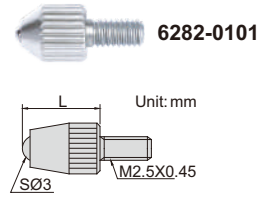
Code	Range	Graduation	Type	Accuracy	Hysteresis	Range/rev	Dial reading	Remark
2309-30F *	30mm	0.01mm	A	35µm	7µm	1mm	0-100	flat back
2309-30 *	30mm	0.01mm	A	35µm	7µm	1mm	0-100	lug back
2309-50 *	50mm	0.01mm	A	40µm	8µm	1mm	0-100	flat back with spare lug back
2309-50D *	50mm	0.01mm	B	40µm	8µm	1mm	0-100	flat back with spare lug back
2309-80	80mm	0.01mm	A	50µm	9µm	1mm	0-100	flat back with spare lug back
2309-80D	80mm	0.01mm	B	50µm	9µm	1mm	0-100	flat back with spare lug back
2309-100D	100mm	0.01mm	B	50µm	9µm	1mm	0-100	flat back with spare lug back

Note: 1) 2309-80, 2309-80D and 2309-100D can only be used vertically
 2) 2309-100D is supplied with stem clamp Ø10mm for magnetic stands (code 6200-60, 6201-60, 6202-80, 6202-100)
 3) 2309-30 and 2309-30F can not accept optional backs (page 88)

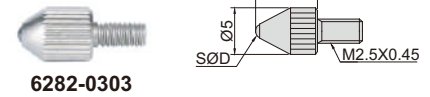
* Supplied with manufacturer inspection certificate traceable to NIST USA

BALL POINTS

Code	Material of measuring face	L (mm)	Code	Material of measuring face	L (mm)	Code	Material of measuring face	L (mm)
6282-0101	carbide	7.3	6282-0109	ceramic	15	6282-0115	carbide	25
6282-0103	ceramic	7.3	6282-0110	carbide	17	6282-0116	ceramic	25
6282-0104	carbide	8.3	6282-0111	carbide	19.3	6282-0117	carbide	30
6282-0106	carbide	12.1	6282-0112	carbide	20	6282-0118	ceramic	30
6282-0107	carbide	14	6282-0113	ceramic	20			
6282-0108	carbide	15	6282-0114	carbide	22			

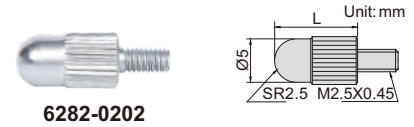


Code	Material of measuring face	SØD (mm)	Code	Material of measuring face	SØD (mm)
6282-0301	steel	1	6282-0304	carbide	2.5
6282-0302	carbide	1.5	6282-0305	carbide	4
6282-0303	carbide	1.8			

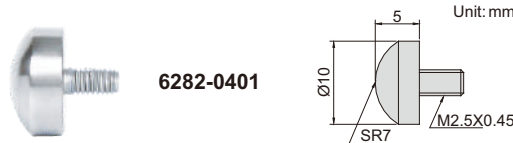


Code	Material of measuring face	L (mm)	Code	Material of measuring face	L (mm)
6282-0202	steel	5	6282-0207	steel	20
6282-0203	steel	10	6282-0208	steel	25
6282-0205	steel	15	6282-0210	steel	30

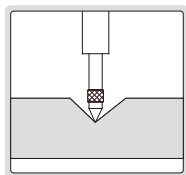
SHELL TYPE POINTS



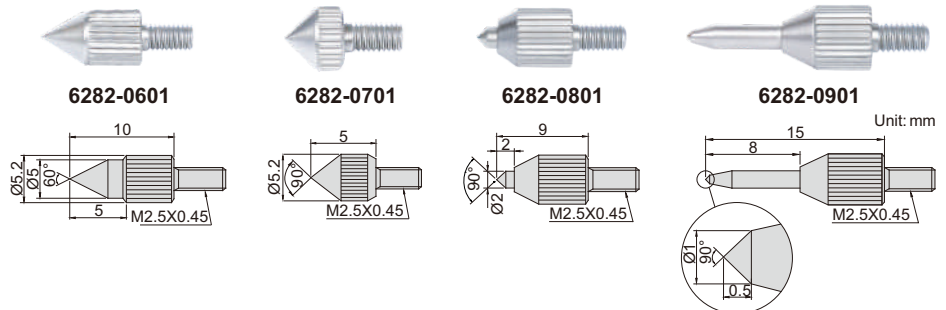
Code	Material of measuring face
6282-0401	steel



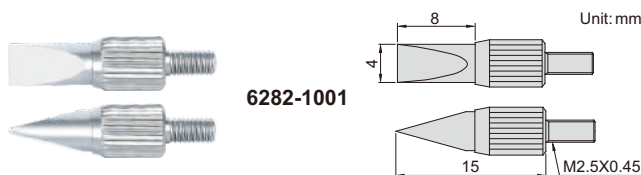
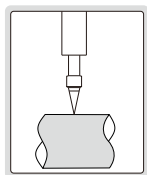
SPHERICAL POINT



Code	Material of measuring face
6282-0601	steel
6282-0701	steel
6282-0801	steel
6282-0901	steel



CONICAL POINTS



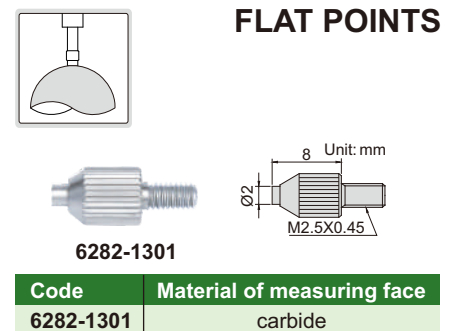
Code	Material of measuring face
6282-1001	steel

KNIFE EDGE POINT



Code	Material of measuring face	L (mm)
6282-1101	steel	8
6282-1102	steel	10

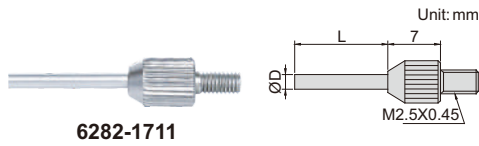
Code	Material of measuring face	ØD (mm)
6282-1201	steel	10
6282-1202	steel	15
6282-1203	steel	20
6282-1204	steel	25
6282-1205	steel	30



Code	Material of measuring face
6282-1301	carbide

FLAT POINTS

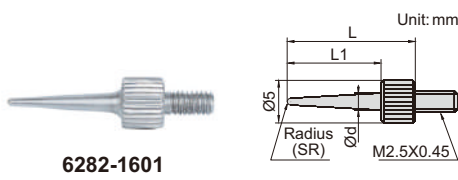
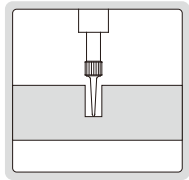
NEEDLE POINTS



6282-1711

Code	Material of measuring face	ØD	L
6282-1701	steel	0.45	3
6282-1702	steel	0.45	5
6282-1703	carbide	1	3
6282-1704	carbide	1	5
6282-1705	carbide	1	8
6282-1706	carbide	1	10
6282-1707	carbide	1	20
6282-1708	carbide	1	40
6282-1709	carbide	1.5	5

Code	Material of measuring face	ØD	L
6282-1710	carbide	1.5	10
6282-1711	carbide	1.5	13
6282-1712	carbide	1.5	20
6282-1713	carbide	1.5	40
6282-1714	carbide	2	8
6282-1715	carbide	2	18
6282-1716	carbide	2	28
6282-1717	carbide	2	40

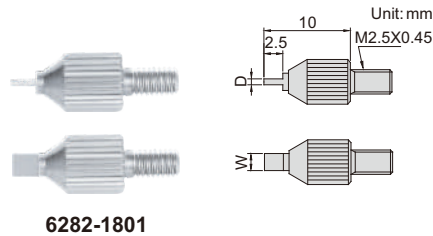


6282-1601

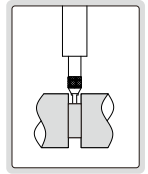
Code	Material of measuring face	L1	L	SR	Ød
6282-1601	steel	11	15	0.4	2
6282-1602	steel	13	17	0.2	2
6282-1603	steel	21	25	0.4	3
6282-1604	steel	31	35	0.4	3

BLADE POINTS

Code	Material of measuring face	D	W
6282-1801	steel	0.4	2
6282-1802	steel	0.6	2
6282-1803	steel	1	4

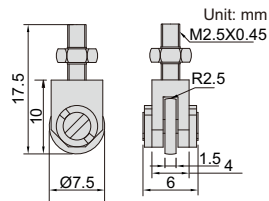


6282-1801



ROLLER POINT

Code	Material of measuring face
6282-1901	steel



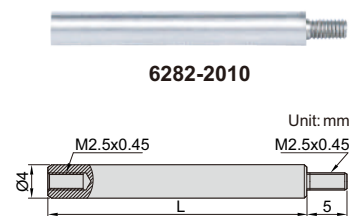
6282-1901

EXTENSION RODS

Code	Material	L (mm)
6282-2001	steel	10
6282-2002	steel	15
6282-2003	steel	20
6282-2004	steel	25
6282-2005	steel	30
6282-2006	steel	35

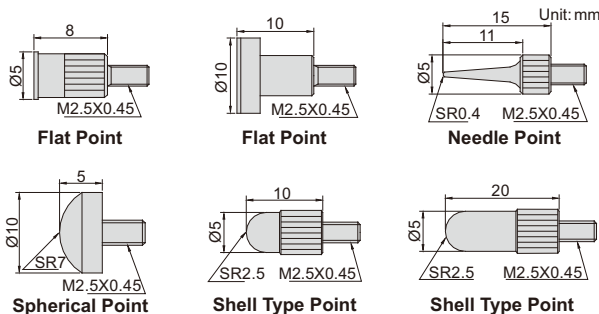
Code	Material	L (mm)
6282-2007	steel	40
6282-2008	steel	45
6282-2009	steel	50
6282-2010	steel	55
6282-2011	steel	60
6282-2012	steel	65

Code	Material	L (mm)
6282-2013	steel	70
6282-2014	steel	75
6282-2015	steel	80
6282-2016	steel	90
6282-2017	steel	100



6282-2010

POINT SET



Code	Material of measuring face
6282-S6	steel



6282-S6

SPINDLE LIFT KNOB



7332



Code
7332

- For dial/digital indicators with spindle diameter Ø4.5mm or Ø5mm

MAGNETIC BACKS

Code	ØD	For digital/dial indicators (mm)
7331-M1	51.5	2103
		2104
		2108
		2109
		2112
		2113
		2115
		2116
		2117
		2118
		2301
		2302
		2308
		2309 (except 2309-30, 2309-30F)
		2313
2314		
2316		
2801		
7331-M2	54	2318

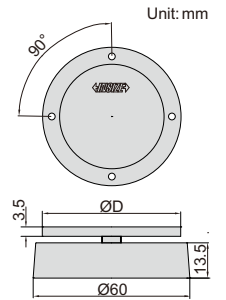


front



back

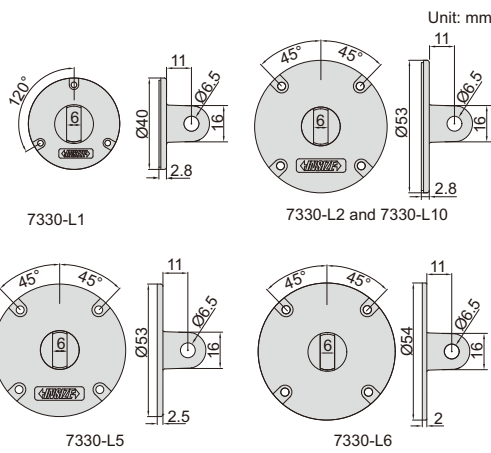
7331-M2



Unit: mm

LUG BACKS

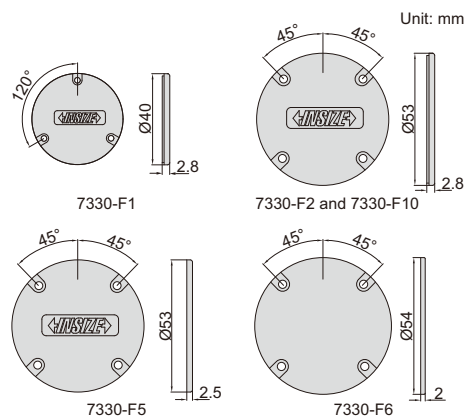
Code	For digital/dial indicators	Code	For digital/dial indicators
7330-L1	2311	7330-L5	2104
	2301		2108
	2302		2109
	2308		2112
	2309 (except 2309-30, 2309-30F)		2113
7330-L2	2313	2115	
	2314	2116	
	2316	2117	
	2801	2118	
	7330-L5	2103	7330-L6
		7330-L10	2310



7330-L2

FLAT BACKS

Code	For digital/dial indicators	Code	For digital/dial indicators
7330-F1	2311	7330-F5	2104
	2301		2108
	2302		2109
	2308		2112
	2309 (except 2309-30, 2309-30F)		2113
7330-F2	2313	2115	
	2314	2116	
	2316	2117	
	2801	2118	
	7330-F5	2103	7330-F6
		7330-F10	2310



7330-F2